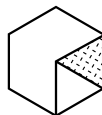


Pointhouse

TATA

Design **Arter&Citton**

Scheda tecnica
/ Technical sheet



archiproducts[®]

DESIGN AWARDS

—
WINNER 2018

Sedia in tubolare tagliato a laser con sistema d'innesto e fissaggio dello schienale in pressofusione di alluminio

Il nome della sedia prende spunto dalla sua estetica, che ci riporta ai primi anni nelle aule di scuola; è una metafora quindi della crescita di Pointhouse e della nostra proiezione per il futuro.

La struttura è in acciaio tagliato a laser con giunto in pressofusione di alluminio, sul quale monta lo schienale con un meccanismo a scomparsa. È una sedia moderna che ben si adatta a vari ambienti della casa, così come risulta perfettamente adeguata anche a spazi pubblici, quali ristoranti, hotel, bar, ecc.

La versatilità e la funzionalità di Tata è accentuata dalla notevole varietà e combinazione di colori e materiali.

/ Chair with laser-cut tubular legs and die-casted aluminium backseat fastening system

The name of the chair comes from its looks, that brings us to the first years of school; in this way it's a metaphor for Pointhouse's growth and for our projection towards the future.

The structure is composed by laser-cut tubular metallic legs and die-casted aluminium backseat fastening system, with a hidden mechanism. It's a modern chair the very well adapts to the various spaces of the house, as well as perfectly suited for public spaces like restaurants, hotels, bars, ecc.

Tata's versatility and functionality is accentuated by the great variety and combinations of colours and materials.

COMPOSIZIONI / COMPOSITIONS:

TATA 1 - POLIPROPILENE / TATA 1 - POLYPROPYLENE

TATA 1 - LEGNO / TATA 1 - WOOD

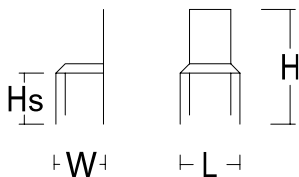
TATA 1 - TESSUTO / TATA 1 - FABRIC

TATA 1 - LEGNO + TESSUTO / TATA 1 - WOOD + FABRIC

TATA 1 - POLIPROPILENE + TESSUTO / TATA 1 - POLYPROPYLENE + FABRIC

MISURE / SIZE:

L.43XW.51XHS.45XH.85



PESO & IMBALLO / WEIGHT & PACKING:



Numero colli
Boxes number

TATA 1

Box: 55x43 H.89 cm
m3 0,21
tot. Kg. per sedia
6,7

FINITURE / FINISHES:

Struttura e gambe / Structure and legs:

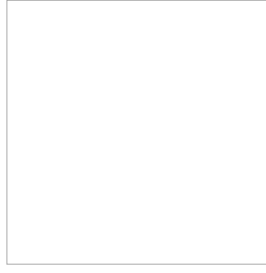
Metallo verniciato
Painted metal



06 GHISA
CAST IRON



02 GRIGIO ALLUMINIO
ALUMINIUM GREY



04 BIANCO LUCIDO
POLISH WHITE



06 BIANCO OPACO
MATT WHITE



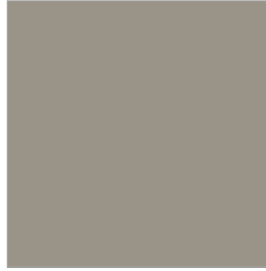
07 NERO OPACO
MATT BLACK



15 GRAFITE OPACO
MATT GRAPHITE



18 GRIGIO SILVER
SILVER GREY



22 TORTORA
DOVE GREY



0P GRIGIO PIOMBO OPACO
MATT LEAD GREY

FINITURE / FINISHES:

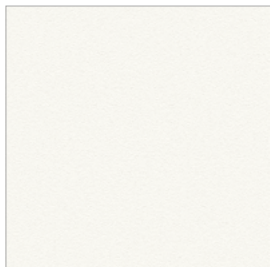
Seduta e schienale / seat and backseat:

Polipropilene / legno impiallacciato / tessuto
polypropylene / veneered wood / fabric

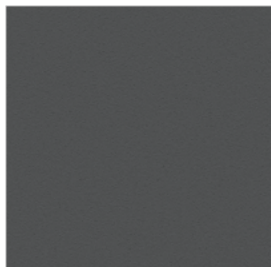
Polipropilene / Polypropylene

Polimero termoplastico caratterizzato da un elevato carico di rottura, una bassa densità, una buona resistenza termica e all'abrasione.

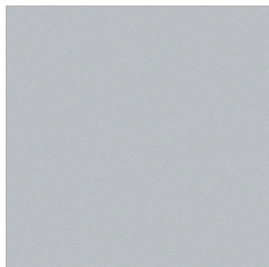
Thermoplastic polymer characterized by a high tensile strength, low density, good thermal and abrasion resistance.



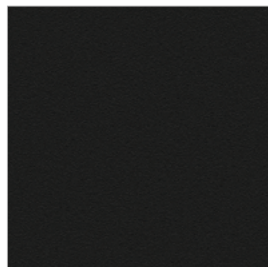
E1 BIANCO
WHITE



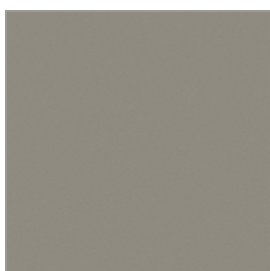
E3 GRAFITE
GRAPHITE



E4 GRIGIO CHIARO
LIGHT GREY



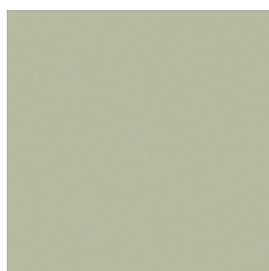
E7 NERO
BLACK



E9 TORTORA
DOVE GREY



EC ROSSO
RED



ED VERDE
GREEN



EE GIALLO
YELLOW

Legno impiallacciato

Si realizza utilizzando fogli di legno nobile di basso spessore, ricavati direttamente dai tronchi di miglior qualità. Vengono incollati e pressati su supporti di varia natura (es. pannelli di truciolare o mdf) e successivamente finiti nella tonalità desiderata.

/Veneered wood

It is made using low thickness noble wood sheets, obtained directly from the best quality logs. They are glued and pressed on various types of supports (eg chipboard or MDF panels) and then finished in the desired shade.



31 ROVERE NATURALE
NATURAL OAK

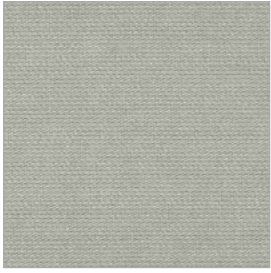


34 ROVERE COTTO
BURNISHED OAK

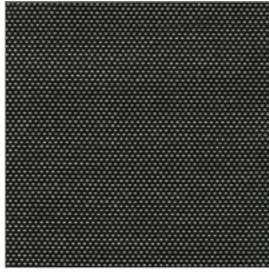


37 ROVERE GRAFITE
GRAPHITE OAK

Tessuto Angel Trick / Angel Trick fabric



T101



T221



T301



T302



T303



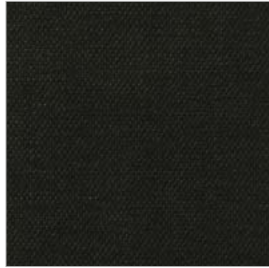
T304



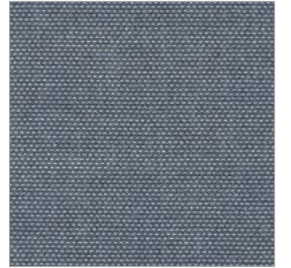
T306



T400



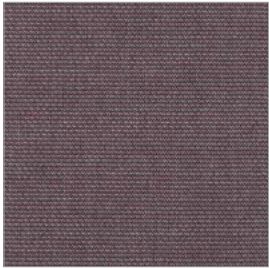
T406



T701



T702



T703



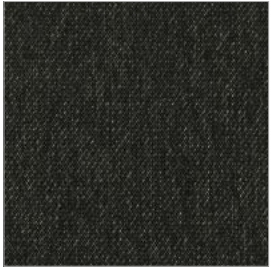
T704



T801



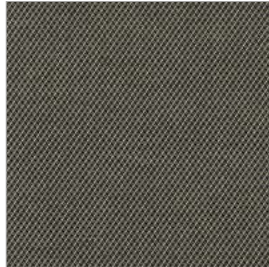
T803



T204



T405



T602



T900



abitex

abitex srl
via del cristo 84
33044 manzano
ud - italy

t +39 0432 746060
www.abitex.eu
info@abitex.eu

angel trick 08163



IT

codice doganale

54072011.

utilizzo

tende, imbottiti.

caratteristiche

100% polipropilene, altezza cm \pm 140,
peso \pm 350 gr/m².

tintura

il prodotto é tinta in massa.

lunghezza pezze

circa 35 mtl.

abrasione

50.000 cicli, ISO 12947-2.

solidità alla luce

4-5, ISO 105 B02.

solidità allo sfregamento

secco 5, umido 4/5, ISO 105 X12.

resistenza alla cucitura

ordito 3 mm, trama 2 mm, ISO 13936-2.

pilling

4-5, ISO 12945-2.

resistenza al fuoco

1IM - UNI 9175; EN 1021 1/2; BS 5852 crib 5;
NF D 60 013; California TB 117-2013;
IMO FTP Code 307 part 8.

attenzione

sono ammesse leggere differenze di colore tra differenti partite.

EN

customs code

54072011.

use

curtains, upholstered furniture.

features

100% polypropylene, width cm \pm 140,
weight \pm 350 g/m².

dyeing

solution dyed product.

roll length

approx. 35 lm.

abrasion resistance

50.000 rubs, ISO 12947-2.

colour fastness to light

4-5, ISO 105 B02.

fastness to rubbing

dry 5, wet 4/5, ISO 105 X12.

seam slippage

warp 3 mm, weft 2 mm, ISO 13936-2.

pilling

4-5, ISO 12945-2.

fire resistance

1IM - UNI 9175; EN 1021 1/2; BS 5852 crib 5;
NF D 60 013; California TB 117-2013;
IMO FTP Code 307 part 8.

attention

slight colour differences between different batches are allowed.



fireproof



imo-med

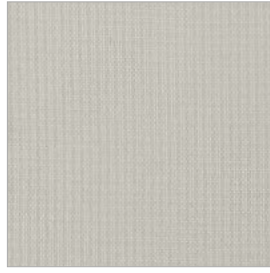
Tessuto Flash Nativa /Flash Nativa fabric



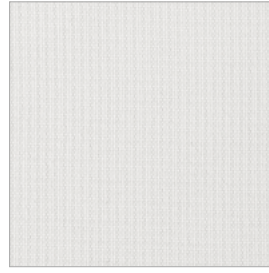
F001



F002



F101



F111



F200



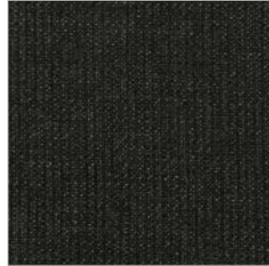
F300



F301



F305



F403



F500



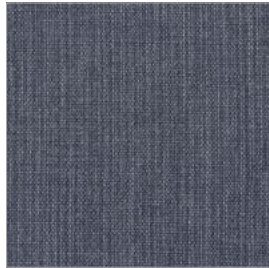
F601



F700



F705



F707



F800



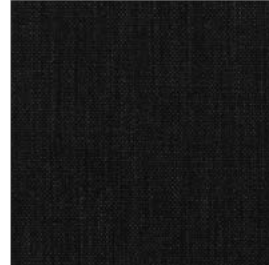
F804



F402



F600



F602



abitex

abitex srl
via del cristo 84
33044 manzano
ud - italy

t +39 0432 746060
www.abitex.eu
info@abitex.eu

flash nativa

08091



IT

codice doganale

54072011.

utilizzo

imbottiti.

caratteristiche

100% polipropilene, altezza cm \pm 140,
peso \pm 320 gr/m².

tintura

il prodotto é tinta in massa.

lunghezza pezze

circa 35 mtl.

abrasione

> 70.000 cicli, ISO 12947-2.

solidità alla luce

4-5, ISO 105 B02.

solidità allo sfregamento

secco 5, umido 4/5, ISO 105 X12.

resistenza alla cucitura

ordito 3 mm, trama 3 mm, ISO 13936-2.

pilling

4-5, ISO 12945-2.

attenzione

sono ammesse leggere differenze di colore tra differenti partite.

EN

customs code

54072011.

use

upholstered furniture.

features

100% polypropylene, width cm \pm 140,
weight \pm 320 g/m².

dyeing

solution dyed product.

roll length

approx. 35 lm.

abrasion resistance

50.000 rubs, ISO 12947-2.

colour fastness to light

4-5, ISO 105 B02.

fastness to rubbing

dry 5, wet 4/5, ISO 105 X12.

seam slippage

warp 3 mm, weft 3 mm, ISO 13936-2.

pilling

4-5, ISO 12945-2.

attention

slight colour differences between different batches are allowed.